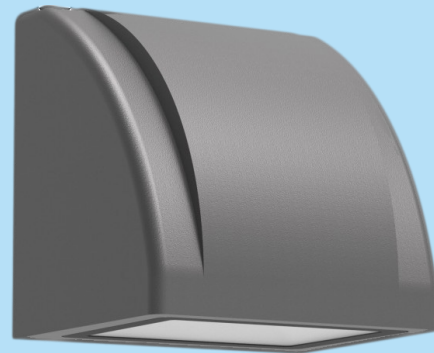


ExLUX 3

TECHNICAL DATA SHEET

110mm

- Wall mounted accent luminaire
- Light Distribution: Symmetrical narrow beam
- Optical System: Reflectors, tempered glass diffuser
- Housing: Aluminium
- Colour: Dark grey



ELECTRICAL DATA

Main Voltage:	220-240V, 0/50/60Hz
Power Factor:	>0.85
Integrated Sensor:	Available

System power*, W:	8.5w
Control gear:	ECG On/off or Dali

LIGHTING DATA

Luminaire output*,lm(ta+25°C):	840lm to 875lm
CRI (Ra):	80+
SDCM:	5
Distribution Type:	Direct

System efficacy, lm/W:	Up to 103
CCT, K:	3000-4000
Light Distribution:	Symmetrical narrow beam
LED lifetime, h:	50000/L80B50

TECHNICAL DATA

Dimensions, mm:	L:111mm W:95mm H:111mm
Net weight, kg:	0.61

Quantity in package, pcs:	1
---------------------------	---

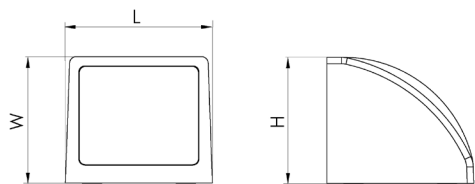
STANDARDS

Operating temperature range, °C:	ta -30...+45
Ingress protection code:	IP65

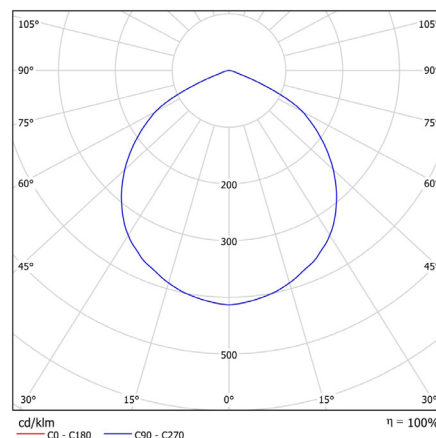
Mechanical impact resistance:	IK08
Certificates:	CE, UKCA, ROHS

Note: Tolerance range for optical and electrical data: $\pm 10\%$. 4C LIGHTING SOLUTIONS is constantly developing and improving its products. The right is reserved to change any product specifications without prior notification.

TECHNICAL DRAWING



LIGHT DISTRIBUTION CURVE



PRODUCTS

COLOUR (K)	LUMINAIRE OUTPUT (LLM)	POWER (W)	EFFICACY (LLM/W)	PART CODE
3000	840	8.5	99	EXLX3/840/3K
4000	875	8.5	103	EXLX3/880/4K

OPTIONS

	PART CODE
DALI driver	/DD
3 Hour emergency	/E3S
3 hour DALI emergency	/E3D
4CMESH	/MM

	PART CODE
4CMESH with Sensor	/MMS
Integrated DALI sensor	/IDS
Custom RAL Bezel or Baffle	/RAL

EXAMPLE PART CODE: EXLX3/880/4K/DD/E3D

Note: Tolerance range for optical and electrical data: $\pm 10\%$. 4C LIGHTING SOLUTIONS is constantly developing and improving its products. The right is reserved to change any product specifications without prior notification.