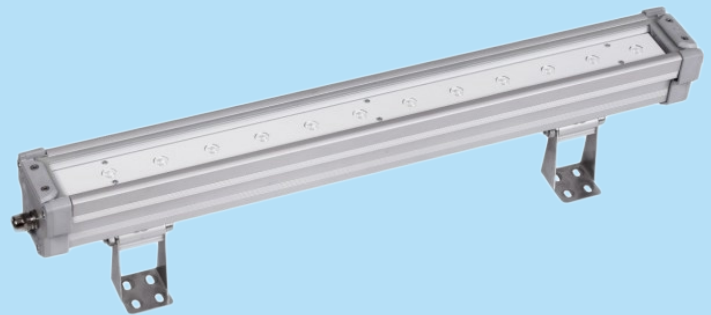


ExLUX 2

TECHNICAL DATA SHEET

1265mm

- Surface mounted accent luminaire
- Light Distribution: Symmetrical narrow beam
- Optical System: Tempered glass diffuser
- Housing: Aluminium
- Colour: light grey



ELECTRICAL DATA

Main Voltage:	220-240V, 0/50/60Hz
Power Factor:	>0,95
Integrated Sensor:	Available

System power*, W:	29.9w to 59.7w
Control gear:	ECG On/off or Dali

LIGHTING DATA

Luminaire output*,lm(ta+25°C):	3643lm to 6324lm
CRI (Ra):	70+
SDCM:	3
Distribution Type:	Direct
UGR Index:	<22

System efficacy, lm/W:	Up to 127
CCT, K:	3000-4000
Light Distribution:	Symmetrical narrow beam
LED lifetime, h:	50000/L80B50

TECHNICAL DATA

Dimensions, mm:	L:1265mm W:82mm H:164mm
Net weight, kg:	6

Quantity in package, pcs:	1
---------------------------	---

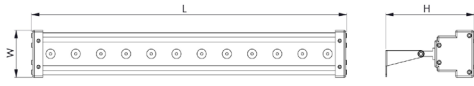
STANDARDS

Operating temperature range, °C:	ta -25...+40
Ingress protection code:	IP66

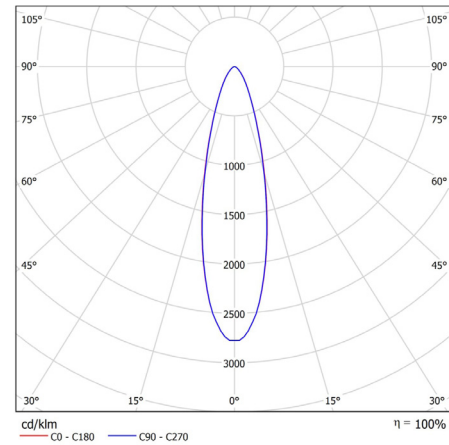
Mechanical impact resistance:	IK09
Certificates:	CE, UKCA, ROHS

Note: Tolerance range for optical and electrical data: $\pm 10\%$. 4C LIGHTING SOLUTIONS is constantly developing and improving its products. The right is reserved to change any product specifications without prior notification.

TECHNICAL DRAWING



LIGHT DISTRIBUTION CURVE



PRODUCTS

COLOUR (K)	LUMINAIRE OUTPUT (LLM)	POWER (W)	EFFICACY (LLM/W)	PART CODE
3000	3643	29.9	127	EXLX2/3640/3K
3000	4551	42.7	111	EXLX2/4550/3K
3000	6072	59.7	106	EXLX2/6070/3K
4000	3794	29.9	127	EXLX2/3790/4K
4000	4740	42.7	111	EXLX2/4740/4K
4000	6324	59.7	106	EXLX2/6320/4K

OPTIONS

	PART CODE
DALI driver	/DD
3 Hour emergency	/E3S
3 hour DALI emergency	/E3D
4CMESH	/MM

	PART CODE
4CMESH with Sensor	/MMS
Integrated DALI sensor	/IDS
Custom RAL Bezel or Baffle	/RAL

EXAMPLE PART CODE: EXLX2/3790/4K/DD/E3D

Note: Tolerance range for optical and electrical data: $\pm 10\%$. 4C LIGHTING SOLUTIONS is constantly developing and improving its products. The right is reserved to change any product specifications without prior notification.