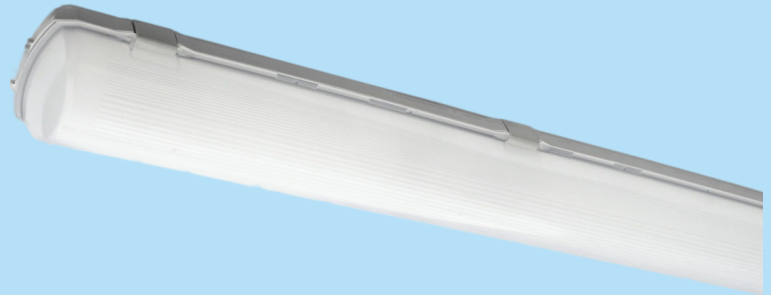


VapourLUX 1

TECHNICAL DATA SHEET

600mm

- Surface mounted or suspended waterproof LED luminaire
- Light Distribution: Direct
- Optical System: opal polycarbonate diffuser, UV stable, impact resistant
- Housing: Polycarbonate
- Colour: light grey



ELECTRICAL DATA

Main Voltage:	220-240V, 0/50/60Hz
Power Factor:	>0,95
Integrated Sensor:	Available

System power*, W:	10w to 25w
Control gear:	ECG On/off or Dali

LIGHTING DATA

Luminaire output*,lm(ta+25°C):	1500 to 4300
CRI (Ra):	80+, CRI90 on request
SDCM:	3
Distribution Type:	Direct

System efficacy, lm/W:	Up to 167
CCT, K:	3000 and 4000
Light Distribution:	Symmetrical wide beam
Beam angle, °:	125x103
LED lifetime, h:	100000/L80B10

TECHNICAL DATA

Dimensions, mm:	L662 x W96 x H111
Net weight, kg:	1.3

Quantity in package, pcs:	1
---------------------------	---

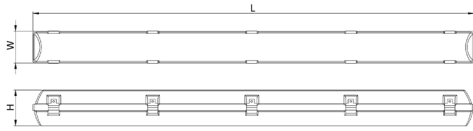
STANDARDS

Operating temperature range, °C:	ta-20...+35
Ingress protection code:	IP66

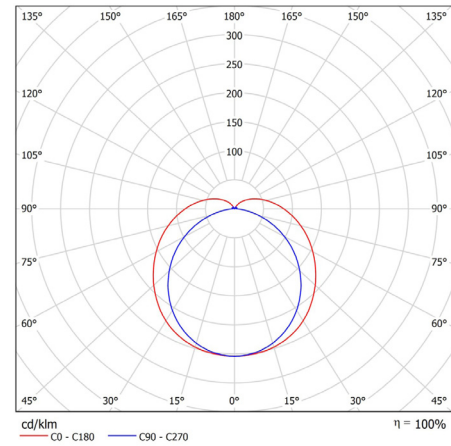
Mechanical impact resistance:	IK10
Certificates:	CE, ROHS

Note: Tolerance range for optical and electrical data: $\pm 10\%$. 4C LIGHTING SOLUTIONS is constantly developing and improving its products. The right is reserved to change any product specifications without prior notification.

TECHNICAL DRAWING



LIGHT DISTRIBUTION CURVE



PRODUCTS

COLOUR (K)	LUMINAIRE OUTPUT (LLM)	POWER (W)	EFFICACY (LLM/W)	PART CODE
3000	1481	10	148	VPLX1/6/1500/3K
3000	2026	13.9	146	VPLX1/6/2000/3K
3000	2687	17.2	156	VPLX1/6/2700/3K
3000	4052	25.6	158	VPLX1/6/4100/3K
4000	1561	10	156	VPLX1/6/1600/4K
4000	2136	13.9	154	VPLX1/6/2100/4K
4000	2833	17.2	165	VPLX1/6/2800/4K
4000	4271	25.6	167	VPLX1/6/4300/4K

OPTIONS

	PART CODE
DALI driver	/DD
3 Hour emergency	/E3S
3 hour DALI emergency	/E3D
MeritMESH	/MM

	PART CODE
MeritMESH with Sensor	/MMS
Integrated DALI sensor	/IDS
Custom RAL	/RAL

EXAMPLE PART CODE: VPLX1/6/1600/4K/DD/E3D

Note: Tolerance range for optical and electrical data: $\pm 10\%$. 4C LIGHTING SOLUTIONS is constantly developing and improving its products. The right is reserved to change any product specifications without prior notification.