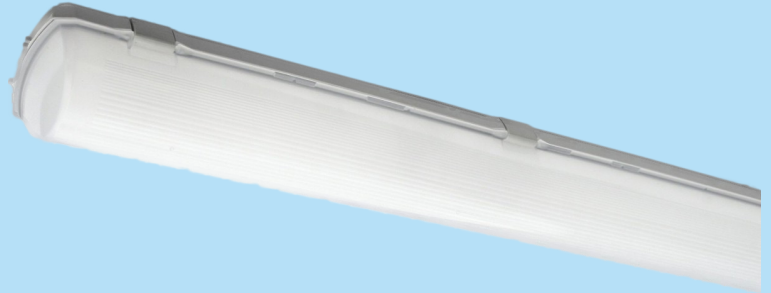


VapourLUX 1

TECHNICAL DATA SHEET

1200mm

- Surface mounted or suspended waterproof LED luminaire
- Light Distribution: Direct
- Optical System: opal polycarbonate diffuser, UV stable, impact resistant
- Housing: Polycarbonate
- Colour: light grey



ELECTRICAL DATA

Main Voltage:	220-240V, 0/50/60Hz
Power Factor:	>0,95
Integrated Sensor:	Available

System power*, W:	17w to 65w
Control gear:	ECG On/off or Dali

LIGHTING DATA

Luminaire output*,lm(ta+25°C):	2700 to 11300
CRI (Ra):	80+, CRI90 on request
SDCM:	3
Distribution Type:	Direct

System efficacy, lm/W:	Up to 172
CCT, K:	3000 and 4000
Light Distribution:	Symmetrical wide beam
Beam angle, °:	125x103
LED lifetime, h:	100000/L80B10

TECHNICAL DATA

Dimensions, mm:	L1272 x W96 x H111
Net weight, kg:	2.1

Quantity in package, pcs:	1
---------------------------	---

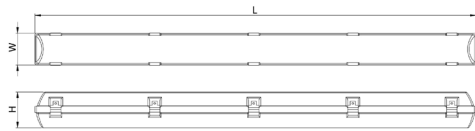
STANDARDS

Operating temperature range, °C:	ta-20...+35
Ingress protection code:	IP66

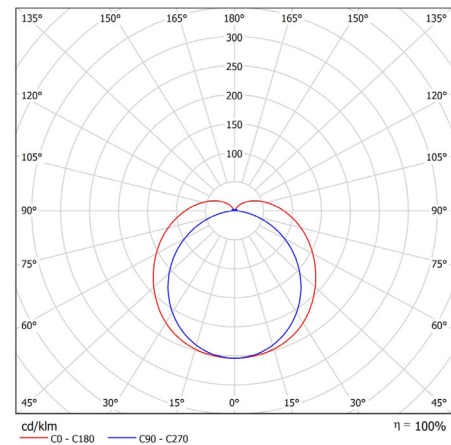
Mechanical impact resistance:	IK10
Certificates:	CE, ROHS

Note: Tolerance range for optical and electrical data: $\pm 10\%$. 4C LIGHTING SOLUTIONS is constantly developing and improving its products. The right is reserved to change any product specifications without prior notification.

TECHNICAL DRAWING



LIGHT DISTRIBUTION CURVE



PRODUCTS

COLOUR (K)	LUMINAIRE OUTPUT (LLM)	POWER (W)	EFFICACY (LLM/W)	PART CODE
3000	2701	17.3	156	VPLX1/12/2700/3K
3000	3523	21.9	161	VPLX1/12/3600/3K
3000	4323	27.5	157	VPLX1/12/4300/3K
3000	5094	33	154	VPLX1/12/5100/3K
3000	6792	43.3	157	VPLX1/12/6800/3K
3000	9086	57.5	158	VPLX1/12/9100/3K
3000	10694	65.9	162	VPLX1/12/11000/3K
4000	2847	17.3	165	VPLX1/12/2900/4K
4000	3713	21.9	170	VPLX1/12/3700/4K
4000	4556	27.5	166	VPLX1/12/4600/4K
4000	5398	33	164	VPLX1/12/5400/4K
4000	7122	43.3	165	VPLX1/12/7100/4K
4000	9628	57.5	167	VPLX1/12/9600/4K
4000	11331	65.9	172	VPLX1/12/11300/4K

OPTIONS

	PART CODE
DALI driver	/DD
3 Hour emergency	/E3S
3 hour DALI emergency	/E3D
MeritMESH	/MM

	PART CODE
MeritMESH with Sensor	/MMS
Integrated DALI sensor	/IDS
Custom RAL	/RAL

EXAMPLE PART CODE: VPLX1/12/2900/4K/DD/E3D

Note: Tolerance range for optical and electrical data: $\pm 10\%$. 4C LIGHTING SOLUTIONS is constantly developing and improving its products. The right is reserved to change any product specifications without prior notification.