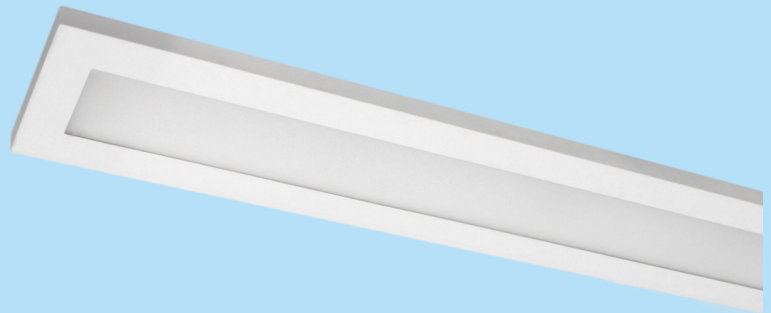


# SurfaceLUX 1

## TECHNICAL DATA SHEET

1500 x 175mm

- Surface Lighting
- Surface mounted LED luminaire
- Light Distribution: Direct
- Optical System: Matt micro-prismatic PMMA diffuser
- Housing: Steel
- Colour: White (RAL 9003S)



### ELECTRICAL DATA

Main Voltage:	220-240V, 0/50/60Hz
Power Factor:	>0,95
Integrated Sensor:	Available

System power*, W:	31.8w to 52.8w
Control gear:	ECG On/off or Dali

### LIGHTING DATA

Luminaire output*,lm(ta+25°C):	4200lm to 7200lm
CRI (Ra):	80+, CRI90 on request
SDCM:	3
Distribution Type:	Direct
UGR Index:	<19

System efficacy, lm/W:	Up to 139
CCT, K:	3000K to 4000K
Light Distribution:	Wide-wide beam
Beam angle, °:	89x90
LED lifetime, h:	50000/L80B10

### TECHNICAL DATA

Dimensions, mm:	L1483 W175 H47
Net weight, kg:	4.8

Quantity in package, pcs:	1
---------------------------	---

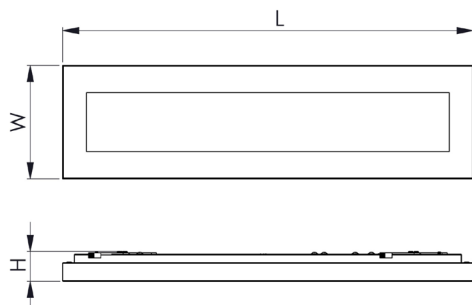
### STANDARDS

Operating temperature range, °C:	ta0...+35
Ingress protection code:	IP44

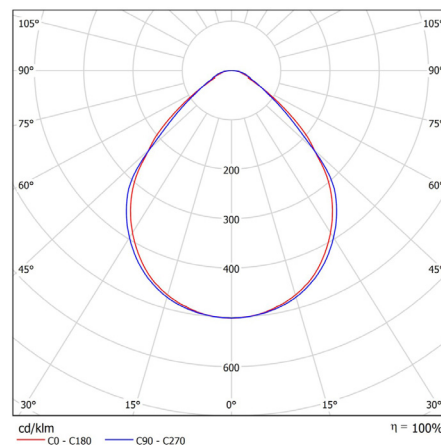
Mechanical impact resistance:	IK05
Certificates:	CE, ROHS

**Note:** Tolerance range for optical and electrical data:  $\pm 10\%$ . 4C LIGHTING SOLUTIONS is constantly developing and improving its products. The right is reserved to change any product specifications without prior notification.

### TECHNICAL DRAWING



### LIGHT DISTRIBUTION CURVE



### PRODUCTS

COLOUR (K)	LUMINAIRE OUTPUT (LLM)	POWER (W)	EFFICACY (LLM/W)	PART CODE
3000	4220	31.8	133	SFLX6/15/4200/3K
3000	6030	45.4	133	SFLX6/15/6000/3K
3000	6907	52.8	131	SFLX6/15/6900/3K
4000	4418	31.8	139	SFLX6/15/4400/4K
4000	6313	45.4	139	SFLX6/15/6300/4K
4000	7231	52.8	137	SFLX6/15/7200/4K

### OPTIONS

	PART CODE
DALI driver	/DD
3 Hour emergency	/E3S
3 hour DALI emergency	/E3D
4CMESH	/MM

	PART CODE
4CMESH with Sensor	/MMS
Integrated DALI sensor	/IDS
Custom RAL	/RAL

**EXAMPLE PART CODE:** SFLX6/15/4400/4K/DD/E3D

**Note:** Tolerance range for optical and electrical data:  $\pm 10\%$ . 4C LIGHTING SOLUTIONS is constantly developing and improving its products. The right is reserved to change any product specifications without prior notification.