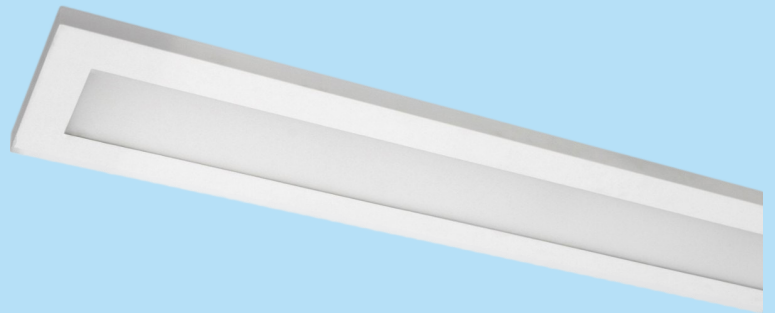


SurfaceLUX 1

TECHNICAL DATA SHEET

1200 x 175mm

- Surface Lighting
- Surface mounted LED luminaire
- Light Distribution: Direct
- Optical System: Matt micro-prismatic PMMA diffuser
- Housing: Steel
- Colour: White (RAL 9003S)



ELECTRICAL DATA

Main Voltage:	220-240V, 0/50/60Hz
Power Factor:	>0,95
Integrated Sensor:	Available

System power*, W:	26.1w to 42.7w
Control gear:	ECG On/off or Dali

LIGHTING DATA

Luminaire output*,lm(ta+25°C):	3400lm to 5800lm
CRI (Ra):	80+, CRI90 on request
SDCM:	3
Distribution Type:	Direct
UGR Index:	<19

System efficacy, lm/W:	Up to 142
CCT, K:	3000K to 4000K
Light Distribution:	Wide-wide beam
Beam angle, °:	89x90
LED lifetime, h:	50000/L80B10

TECHNICAL DATA

Dimensions, mm:	L1203 W175 H47
Net weight, kg:	3.9

Quantity in package, pcs:	1
---------------------------	---

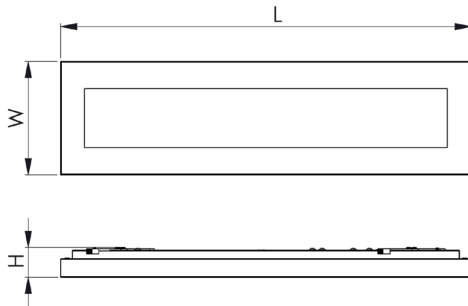
STANDARDS

Operating temperature range, °C:	ta0...+35
Ingress protection code:	IP44

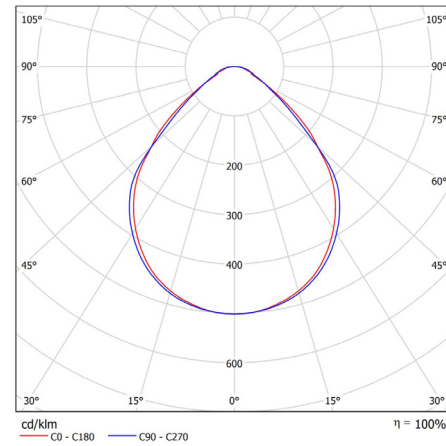
Mechanical impact resistance:	IK05
Certificates:	CE, ROHS

Note: Tolerance range for optical and electrical data: $\pm 10\%$. 4C LIGHTING SOLUTIONS is constantly developing and improving its products. The right is reserved to change any product specifications without prior notification.

TECHNICAL DRAWING



LIGHT DISTRIBUTION CURVE



PRODUCTS

COLOUR (K)	LUMINAIRE OUTPUT (LLM)	POWER (W)	EFFICACY (LLM/W)	PART CODE
3000	3376	26.1	129	SFLX1/12/3400/3K
3000	4824	35.5	136	SFLX1/12/4800/3K
3000	5525	42.7	129	SFLX1/12/5500/3K
4000	3534	26.1	136	SFLX1/12/3500/4K
4000	5051	35.5	142	SFLX1/12/5100/4K
4000	5785	42.7	135	SFLX1/12/5800/4K

OPTIONS

	PART CODE
DALI driver	/DD
3 Hour emergency	/E3S
3 hour DALI emergency	/E3D
4CMESH	/MM

	PART CODE
4CMESH with Sensor	/MMS
Integrated DALI sensor	/IDS
Custom RAL	/RAL

EXAMPLE PART CODE: SFLX6/12/3500/4K/DD/E3D

Note: Tolerance range for optical and electrical data: ±10%. 4C LIGHTING SOLUTIONS is constantly developing and improving its products. The right is reserved to change any product specifications without prior notification.