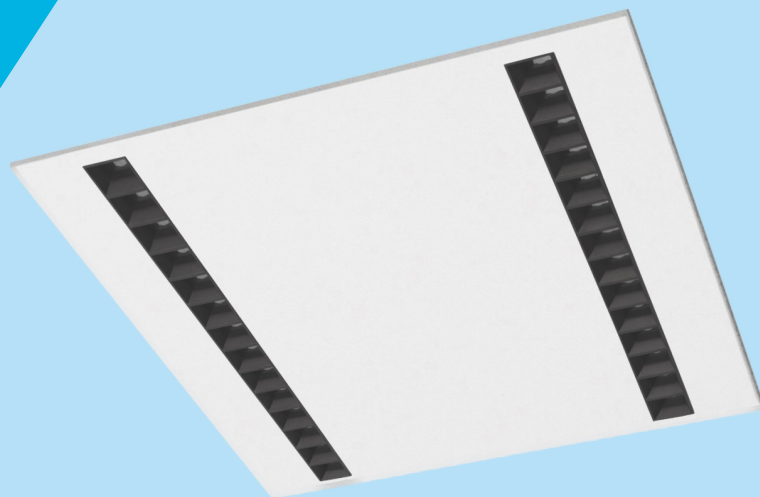


# GridLUX 3

600 x 600mm

- Recessed LED luminaire fits most grid ceilings
- Light Distribution: Direct
- Optical System: double parabolic reflector with lenses, UGR <16 ultra-low glare
- Housing: Steel
- Colour: White (RAL9003), other colours available on request



## TECHNICAL DATA SHEET

### ELECTRICAL DATA

Main Voltage:	220-240V, 0/50/60Hz
Power Factor:	>0,95
Integrated Sensor:	Available

System power*, W:	17w to 30w
Control gear:	ECG On/off or Dali

### LIGHTING DATA

Luminaire output*,lm(ta+25°C):	2600 to 4500
CRI (Ra):	80+, CRI90 on request
SDCM:	3
Distribution Type:	Direct
UGR Index:	<16

System efficacy, lm/W:	Up to 153
CCT, K:	3000 and 4000
Light Distribution:	Symmetrical wide beam
Beam angle, °:	77
LED lifetime, h:	100000/L80B10

### TECHNICAL DATA

Dimensions, mm:	L595 x W595 x H31
Net weight, kg:	2.8

Quantity in package, pcs:	1
---------------------------	---

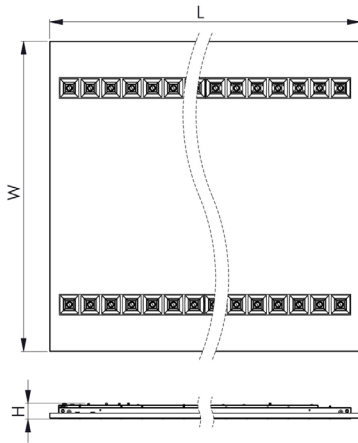
### STANDARDS

Operating temperature range, °C:	ta0...+35
Ingress protection code:	IP40/20

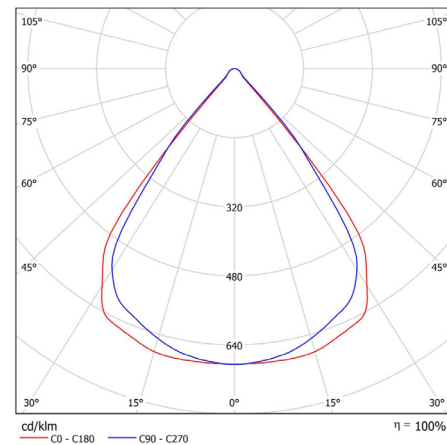
Mechanical impact resistance:	IK05
Certificates:	CE, ROHS

**Note:** Tolerance range for optical and electrical data:  $\pm 10\%$ . 4C LIGHTING SOLUTIONS is constantly developing and improving its products. The right is reserved to change any product specifications without prior notification.

### TECHNICAL DRAWING



### LIGHT DISTRIBUTION CURVE



### PRODUCTS

COLOUR (K)	LUMINAIRE OUTPUT (LLM)	POWER (W)	EFFICACY (LLM/W)	PART CODE
3000	2557	17.6	145	GRLX3/66/2600/3K
3000	3138	21.9	143	GRLX3/66/3100/3K
3000	3698	26.1	142	GRLX3/66/3700/3K
3000	4262	30.8	138	GRLX3/66/4300/3K
4000	2696	17.6	153	GRLX3/66/2700/4K
4000	3307	21.9	151	GRLX3/66/3300/4K
4000	3898	26.1	149	GRLX3/66/3900/4K
4000	4492	30.8	146	GRLX3/66/4500/4K

### OPTIONS

	PART CODE		PART CODE
DALI driver	/DD	Integrated DALI sensor	/IDS
3 Hour emergency	/E3S	Air handling slots	/HAL
3 hour DALI emergency	/E3D	Plasterboard mounting frame	/PBF
4CMESH	/MM	Custom RAL	/RAL
4CMESH with Sensor	/MMS		

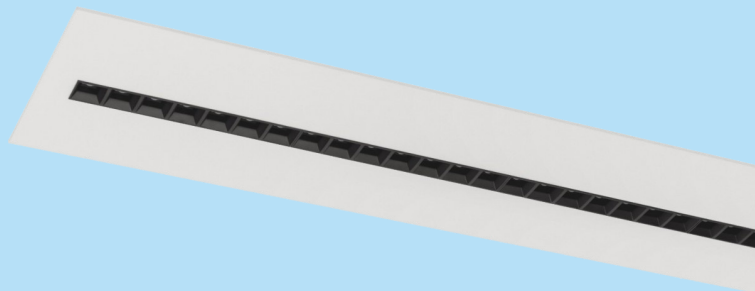
**EXAMPLE PART CODE:** GRLX3/66/2700/4K/DD/E3D

**Note:** Tolerance range for optical and electrical data:  $\pm 10\%$ . 4C LIGHTING SOLUTIONS is constantly developing and improving its products. The right is reserved to change any product specifications without prior notification.

# GridLUX 3

1200 x 300mm

- Recessed LED luminaire fits most grid ceilings
- Light Distribution: Direct
- Optical System: double parabolic reflector with lenses, UGR <16 ultra-low glare
- Housing: Steel
- Colour: White (RAL9003), other colours available on request



## TECHNICAL DATA SHEET

### ELECTRICAL DATA

Main Voltage:	220-240V, 0/50/60Hz
Power Factor:	>0,95
Integrated Sensor:	Available

System power*, W:	17w to 30w
Control gear:	ECG On/off or Dali

### LIGHTING DATA

Luminaire output*,lm(ta+25°C):	2600 to 4500
CRI (Ra):	80+, CRI90 on request
SDCM:	3
Distribution Type:	Direct
UGR Index:	<16

System efficacy, lm/W:	Up to 153
CCT, K:	3000 and 4000
Light Distribution:	Symmetrical wide beam
Beam angle, °:	77
LED lifetime, h:	100000/L80B10

### TECHNICAL DATA

Dimensions, mm:	L1195 x W295 x H31
Net weight, kg:	2.8

Quantity in package, pcs:	1
---------------------------	---

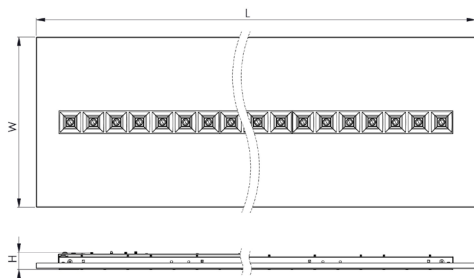
### STANDARDS

Operating temperature range, °C:	ta0...+35
Ingress protection code:	IP40/20

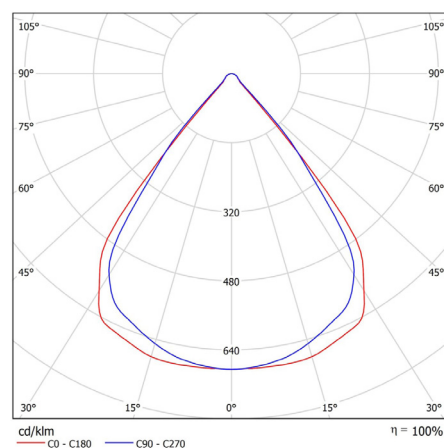
Mechanical impact resistance:	IK05
Certificates:	CE, ROHS

**Note:** Tolerance range for optical and electrical data:  $\pm 10\%$ . 4C LIGHTING SOLUTIONS is constantly developing and improving its products. The right is reserved to change any product specifications without prior notification.

### TECHNICAL DRAWING



### LIGHT DISTRIBUTION CURVE



### PRODUCTS

COLOUR (K)	LUMINAIRE OUTPUT (LLM)	POWER (W)	EFFICACY (LLM/W)	PART CODE
3000	2557	17.6	145	GRLX3/123/2600/3K
3000	3138	21.9	143	GRLX3/123/3100/3K
3000	3698	26.1	142	GRLX3/123/3700/3K
3000	4262	30.8	138	GRLX3/123/4300/3K
4000	2696	17.6	153	GRLX3/123/2700/4K
4000	3307	21.9	151	GRLX3/123/3300/4K
4000	3898	26.1	149	GRLX3/123/3900/4K
4000	4492	30.8	146	GRLX3/123/4500/4K

### OPTIONS

	PART CODE
DALI driver	/DD
3 Hour emergency	/E3S
3 hour DALI emergency	/E3D
4CMESH	/MM
4CMESH with Sensor	/MMS

	PART CODE
Integrated DALI sensor	/IDS
Air handling slots	/HAL
Plasterboard mounting frame	/PBF
Custom RAL	/RAL

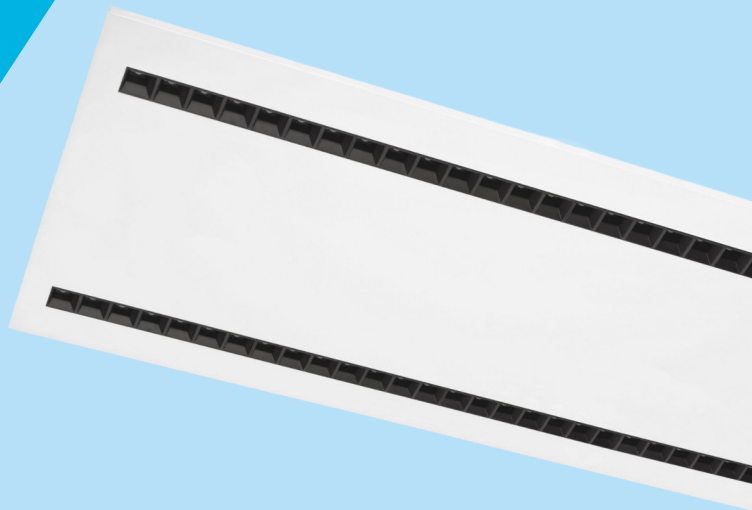
**EXAMPLE PART CODE:** GRLX3/123/2700/4K/DD/E3D

**Note:** Tolerance range for optical and electrical data:  $\pm 10\%$ . 4C LIGHTING SOLUTIONS is constantly developing and improving its products. The right is reserved to change any product specifications without prior notification.

# GridLUX 3

1200 x 600mm

- Recessed LED luminaire fits most grid ceilings
- Light Distribution: Direct
- Optical System: double parabolic reflector with lenses, UGR <16 ultra-low glare
- Housing: Steel
- Colour: White (RAL9003), other colours available on request



## TECHNICAL DATA SHEET

### ELECTRICAL DATA

Main Voltage:	220-240V, 0/50/60Hz
Power Factor:	>0,95
Integrated Sensor:	Available

System power*, W:	33w to 59w
Control gear:	ECG On/off or Dali

### LIGHTING DATA

Luminaire output*,lm(ta+25°C):	5100 to 9000
CRI (Ra):	80+, CRI90 on request
SDCM:	3
Distribution Type:	Direct
UGR Index:	<16

System efficacy, lm/W:	Up to 160
CCT, K:	3000 and 4000
Light Distribution:	Symmetrical wide beam
Beam angle, °:	77
LED lifetime, h:	100000/L80B10

### TECHNICAL DATA

Dimensions, mm:	L1195 x W595 x H31
Net weight, kg:	4.8

Quantity in package, pcs:	1
---------------------------	---

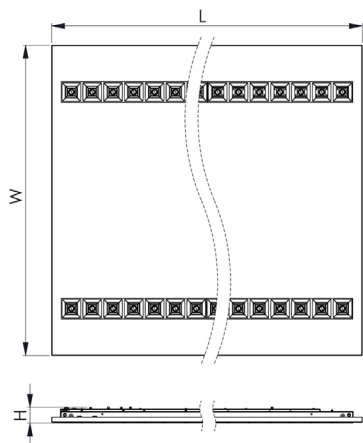
### STANDARDS

Operating temperature range, °C:	ta0...+35
Ingress protection code:	IP40/20

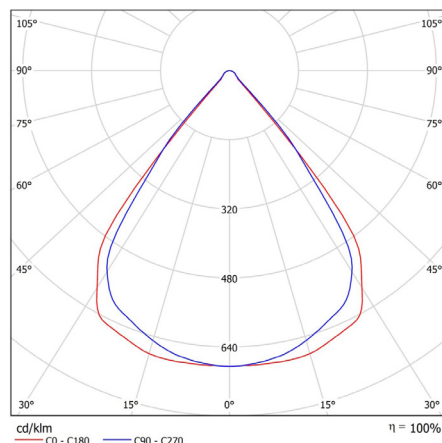
Mechanical impact resistance:	IK05
Certificates:	CE, ROHS

**Note:** Tolerance range for optical and electrical data:  $\pm 10\%$ . 4C LIGHTING SOLUTIONS is constantly developing and improving its products. The right is reserved to change any product specifications without prior notification.

### TECHNICAL DRAWING



### LIGHT DISTRIBUTION CURVE



### PRODUCTS

COLOUR (K)	LUMINAIRE OUTPUT (LLM)	POWER (W)	EFFICACY (LLM/W)	PART CODE
3000	5114	33.6	152	GRLX3/126/5100/3K
3000	6275	41.9	150	GRLX3/126/6300/3K
3000	7396	50.6	146	GRLX3/126/7400/3K
3000	8524	59	144	GRLX3/126/8500/3K
4000	5391	33.7	160	GRLX3/126/5400/4K
4000	6614	41.9	158	GRLX3/126/6600/4K
4000	7795	50.5	154	GRLX3/126/7800/4K
4000	8985	58.9	153	GRLX3/126/9000/4K

### OPTIONS

	PART CODE
DALI driver	/DD
3 Hour emergency	/E3S
3 hour DALI emergency	/E3D
4CMESH	/MM
4CMESH with Sensor	/MMS

	PART CODE
Integrated DALI sensor	/IDS
Air handling slots	/HAL
Plasterboard mounting frame	/PBF
Custom RAL	/RAL

**EXAMPLE PART CODE:** GRLX3/126/5400/4K/DD/E3D

**Note:** Tolerance range for optical and electrical data:  $\pm 10\%$ . 4C LIGHTING SOLUTIONS is constantly developing and improving its products. The right is reserved to change any product specifications without prior notification.