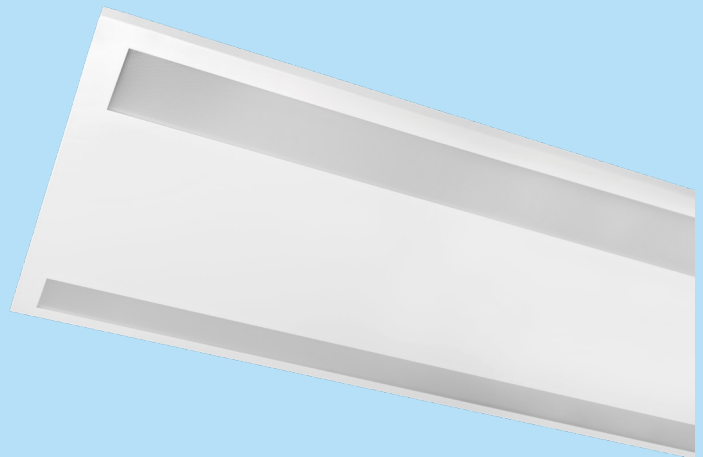


GridLUX 1

1200 x 600mm

- Recessed LED luminaire fits most grid ceilings
- Light Distribution: Direct
- Optical System: matt micro-prismatic PMMA diffuser, low glare TP(a)
- Housing: Steel
- Colour: White (RAL9003), other colours available on request



ELECTRICAL DATA

| | |
|--------------------|---------------------|
| Main Voltage: | 220-240V, 0/50/60Hz |
| Power Factor: | >0,95 |
| Integrated Sensor: | Available |

| | |
|-------------------|--------------------|
| System power*, W: | 34w to 65w |
| Control gear: | ECG On/off or Dali |

LIGHTING DATA

| | |
|--------------------------------|-----------------------|
| Luminaire output*,lm(ta+25°C): | 5100 to 10100 |
| CRI (Ra): | 80+, CRI90 on request |
| SDCM: | 3 |
| Distribution Type: | Direct |
| UGR Index: | <19 |

| | |
|------------------------|-----------------------|
| System efficacy, lm/W: | Up to 156 |
| CCT, K: | 3000 and 4000 |
| Light Distribution: | Symmetrical wide beam |
| Beam angle, °: | 90 |
| LED lifetime, h: | 100000/L80B10 |

TECHNICAL DATA

| | |
|-----------------|--------------------|
| Dimensions, mm: | L1195 x W595 x H47 |
| Net weight, kg: | 6.2 |

| | |
|---------------------------|---|
| Quantity in package, pcs: | 1 |
|---------------------------|---|

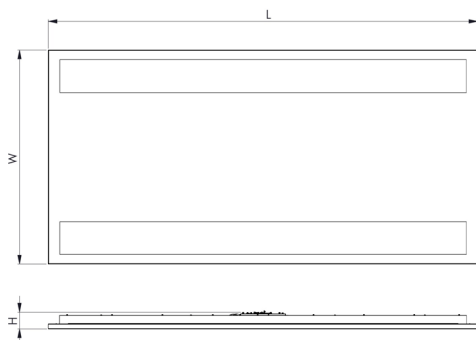
STANDARDS

| | |
|----------------------------------|-----------|
| Operating temperature range, °C: | ta0...+35 |
| Ingress protection code: | IP44/20 |

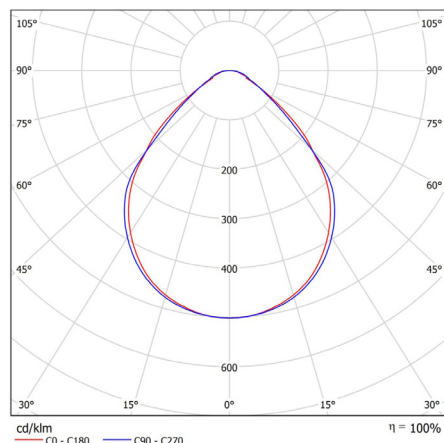
| | |
|-------------------------------|----------|
| Mechanical impact resistance: | IK05 |
| Certificates: | CE, ROHS |

Note: Tolerance range for optical and electrical data: $\pm 10\%$. MERIT LIGHTING SOLUTIONS is constantly developing and improving its products. The right is reserved to change any product specifications without prior notification.

TECHNICAL DRAWING



LIGHT DISTRIBUTION CURVE



PRODUCTS

| COLOUR (K) | LUMINAIRE OUTPUT (LLM) | POWER (W) | EFFICACY (LLM/W) | PART CODE |
|------------|------------------------|-----------|------------------|-------------------|
| 3000 | 5103 | 34.5 | 148 | GLX1/126/5100/3K |
| 3000 | 7070 | 50.7 | 140 | GLX1/126/7050/3K |
| 3000 | 9623 | 65.1 | 148 | GLX1/126/9600/3K |
| 4000 | 5379 | 34.5 | 156 | GLX1/126/5300/4K |
| 4000 | 7452 | 50.7 | 147 | GLX1/126/7400/4K |
| 4000 | 10143 | 65.1 | 156 | GLX1/126/10100/4K |

OPTIONS

| | PART CODE |
|-----------------------|-----------|
| DALI driver | /DD |
| 3 Hour emergency | /E3S |
| 3 hour DALI emergency | /E3D |
| MeritMESH | /MM |
| MeritMESH with Sensor | /MMS |

| | PART CODE |
|-----------------------------|-----------|
| Integrated DALI sensor | /IDS |
| Air handling slots | /HAL |
| Plasterboard mounting frame | /PBF |
| Custom RAL | /RAL |

EXAMPLE PART CODE: GLX1/126/5300/4K/DD/E3D

Note: Tolerance range for optical and electrical data: $\pm 10\%$. MERIT LIGHTING SOLUTIONS is constantly developing and improving its products. The right is reserved to change any product specifications without prior notification.